

# ULTRASONIC AUTOMATIC METAL BONDER

# REBO-Metal-S



# REBO-Metal-S Major characteristics



## Servo motor for force mechanism

- Digitized bonding condition.
- Capable of increasing bonding tact and productivity.

## X,Y,θ,Z axis moving mechanism

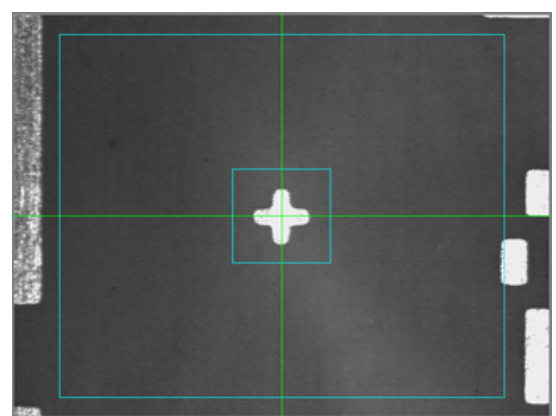
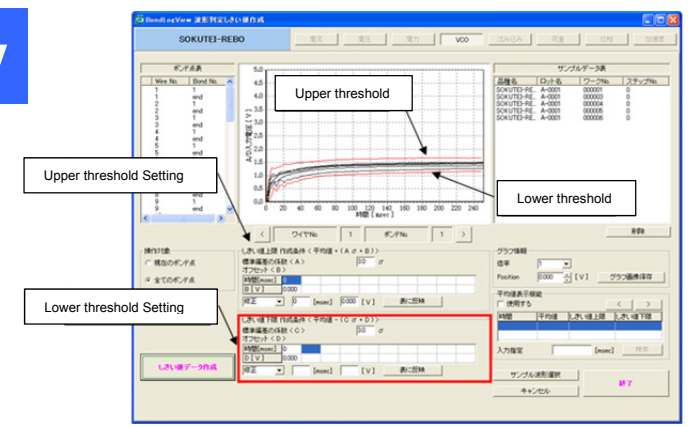
- Recognition system enables programmable auto bonding.

## **PATENTED!** Screw exchang type tool

- Able to exchange tool in short time. Reduces machine stopping time.

## Waveform monitoring

- Able to log electricity, sink, frequency, energy, force, and phase waveform.
- Able to set threshold on waveform and judge defective waveform, it will contribute to production management.

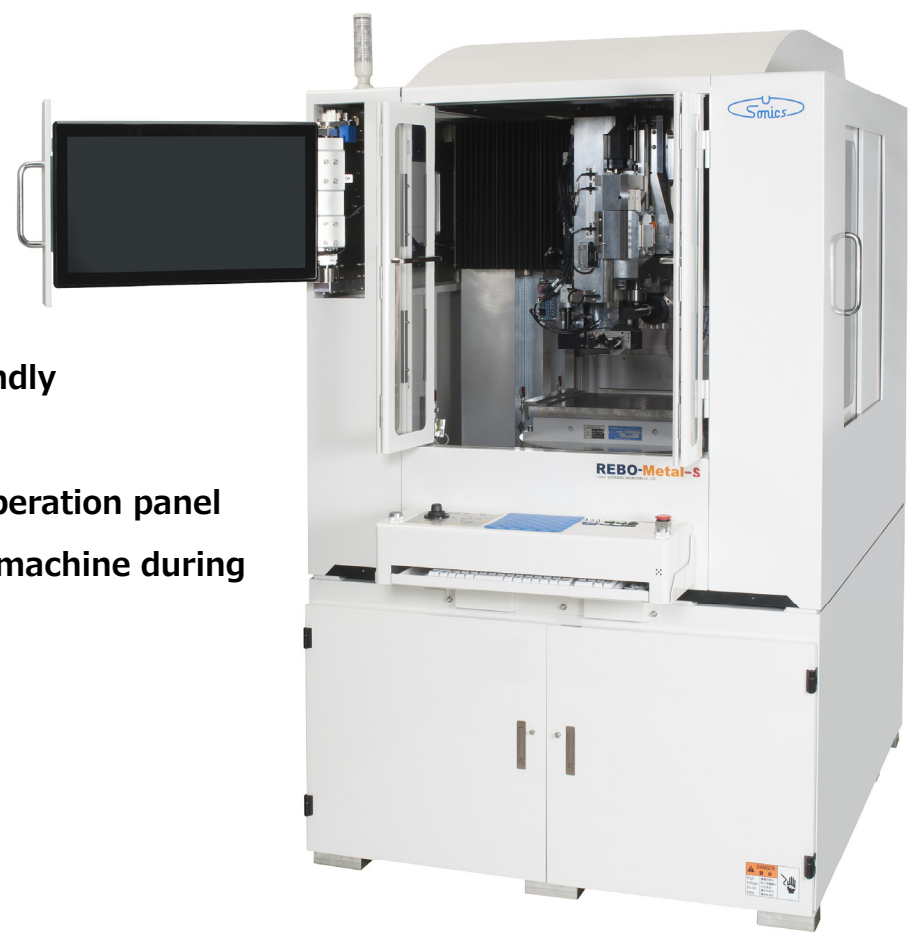


## Pattern recognition system

- Equipped with same pattern recognition system which has lot of achievement with our wire bonder.
- Accurate and high-speed recognition system.

## Easy operation

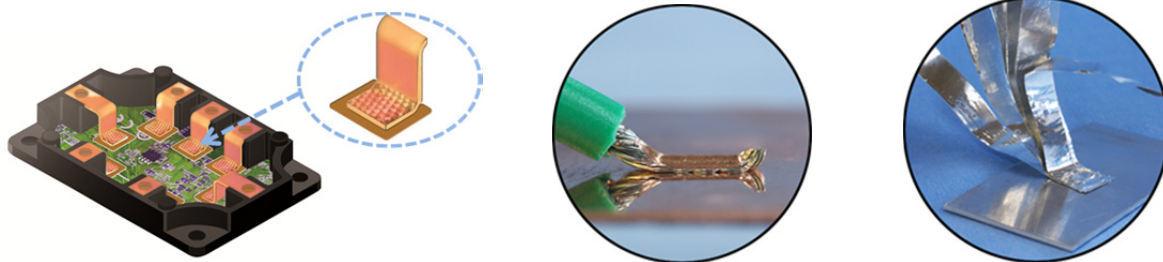
- Windows based user friendly operation system.
- Convenient retractable operation panel which would not disturb machine during operation.



Name	REBO-Metal-S
Bonding method	Ultrasonic bonding method
Tool attach length	Approximately 60mm (When 21kHz spec.)
Bonding area	Z axis : 46.5mm θ : Inside of diameter 350mm
Oscillation	Auto chasing frequency oscillation control
Output	3000W
Frequency	21kHz (Able to change to 28kHz with conversion kit)
Oscillation mode	Soft start : 25~500ms (8 setps) Variable amplitude : 20~100% 1% unit (Able to program for each bonding point)
Bonding time	Able to set 0~4000ms for each bonding point
Pattern recognition	256 steps gray scale pattern matching (Surface co-axial light×1、Epi-illumination×2)
Operation	21.5inch LCD monitor, touch panel, OS Windows8※
Force method	AC servo motor press method
Force range	50N~1000N
Power supply	3 phase 200V±10% (50/60Hz) 5000VA
Dimension	1100(W)x1450(D)x1950(H)mm ※Exclude monitor and signal tower
Weight	Approx. 1450kg

※ Windows is a registered trademark of United States Microsoft Corporation.

**Example of application** Not only for power module but also able to apply for various workpieces.



**Caution : Please read operation manual carefully before using.**

The specification and outer dimensions are subject to change without prior notice for improvement.

<http://www.cho-onpa.co.jp/> Latest information available

 **超音波工業株式会社**  
**ULTRASONIC ENGINEERING CO., LTD.**

Head office and factory  
1-6-1, Kashiwa-cho, Tachikawa city, Tokyo, Japan, 190-8522  
Tel: +81-42-537-1711 / Fax: +81-42-536-8485  
URL: <http://www.cho-onpa.co.jp/>